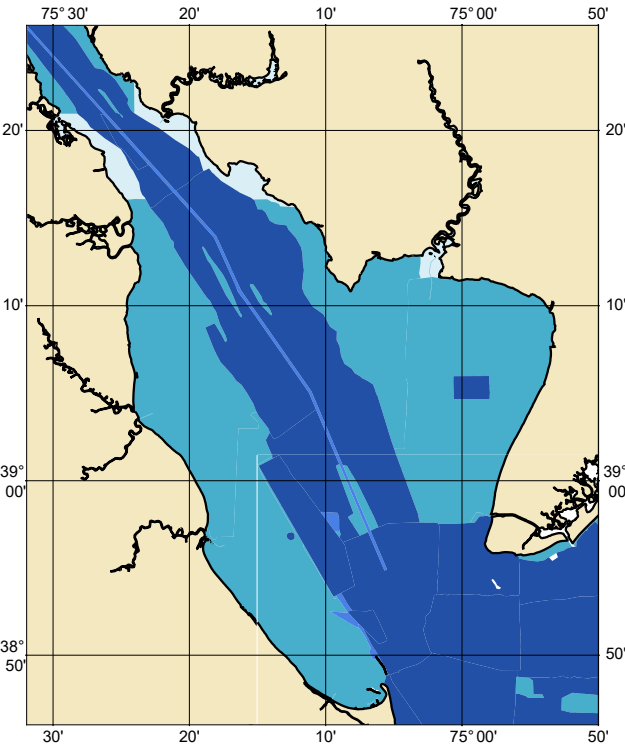


Zone of Confidence (ZOC) Diagram



ZOC CATEGORIES

ZOC	COLOR	POSITION ACCURACY	DEPTH ACCURACY	SEAFLOOR COVERAGE
A1		± 5 m + 5% depth ± 16.4 ft + 5% depth	= 0.50 m +1% d = 1.6 ft +1% d = 0.3 fm +1% d	All significant seafloor features detected.
A2		± 20 m ± 65.6 ft	= 1.00 m +2% d = 3.3 ft +2% d = 0.6 fm +2% d	All significant seafloor features detected.
B		± 50 m ± 164.0 ft	= 1.00 m +2% d = 3.3 ft +2% d = 0.6 fm +2% d	Uncharted features hazardous to surface navigation are not expected but may exist.
C		± 500 m ± 1640.4 ft	= 2.00 m +2% d = 6.6 ft +2% d = 1.1 fm +2% d	Depth anomalies may be expected.
D		Worse than ZOC C	Worse than ZOC C	Large depth anomalies may be expected.
U		Unassessed - The quality of the bathymetric data has yet to be assessed.		

NOAA CUSTOM CHART
NOTES GEOSPATIAL DATABASE
VERSION 3.0B - 20 FEBRUARY 2025

The records of the NOAA Custom Chart Notes Geospatial Database are current as of February 20, 2025. Subsequent additions and refinements are to be expected. Please refer to all available navigational publications for complete information about the charted area.

CAUTION
CHART UPDATES

This NOAA Custom Chart contains up-to-date information only as of the time of creation, and will become outdated. Mariners are advised to visit <https://distribution.charts.noaa.gov/navigation-updates/> to check for critical and routine updates, and to render a new NOAA Custom Chart when the ENC data used to make the chart is updated. Notices to Mariners are not issued for corrections to this NOAA Custom Chart.

AUTHORITIES

Hydrography and topography by the National Ocean Service, Coast Survey, with additional data from the Corps of Engineers, Geological Survey, U.S. Coast Guard and National Geospatial-Intelligence Agency.

COMMENTS REQUESTED

NOAA encourages users to submit inquiries, discrepancies, or comments about this chart via NOAA's ASSIST tool at <https://nauticalcharts.noaa.gov/customer-service/assist/>.

CAUTION
AUTOMATED CHART GENERATION

This NOAA Custom Chart has been automatically rendered from NOAA Electronic Navigational Chart (NOAA ENC®) data. Mariners using this NOAA Custom Chart are advised that this is a static reproduction of the NOAA ENC®. This NOAA Custom Chart has not been individually quality checked or adjusted for optimal use for navigation. The portrayal may be at a different scale from that of the original NOAA ENC®. Mariners are advised to use caution when using this NOAA Custom Chart for navigation and are encouraged to use the latest NOAA ENC® to access the most up-to-date information. Mariners must also comply with all applicable regulatory requirements.

HEIGHTS

Heights of fixed aids to navigation and vertical clearances of overhead obstructions will be shown in feet if the units are set to feet or fathoms. If units are set to meters, heights will be shown in meters. Land elevation values are shown in meters only.

WATER LEVELS, CURRENTS, AND TIDES

Real-time water levels, tide predictions, and tidal current predictions are available on the internet from NOAA's Center for Operational Oceanographic Products and Services (CO-OPS) at https://tidesandcurrents.noaa.gov/water_level_info.html and https://tidesandcurrents.noaa.gov/currents_info.html.

ABBREVIATIONS

For complete list of Symbols and Abbreviations, see Chart No. 1.

POLLUTION REPORTS

Report all spills of oil and hazardous substances to the National Response Center via 1-800-424-8802 (toll free), or to the nearest U.S. Coast Guard facility if telephone communication is impossible (33 CFR 153).

WARNING

The prudent mariner will not rely solely on any single aid to navigation, particularly on floating aids. See U.S. Coast Guard Light List and U.S. Coast Pilot for details.

SUPPLEMENTAL INFORMATION

Consult U.S. Coast Pilot 3 for important supplemental information.

VERTICAL DATUM

Overhead clearances are referred to Mean High Water (MHW).

NOTE A

Navigation regulations are published in Chapter 2, U.S. Coast Pilot 3. Additions or revisions to Chapter 2 are published in the Notices to Mariners. Information concerning the regulations may be obtained at the Office of the Commander, 5th Coast Guard District in Portsmouth, VA or at the Office of the District Engineer, Corps of Engineers in Philadelphia, PA.

Refer to charted regulation section numbers.

AIDS TO NAVIGATION

Consult U.S. Coast Guard Light List for supplemental information concerning aids to navigation.

RADAR REFLECTORS

Radar reflectors have been placed on many floating aids to navigation. Individual radar reflector identification on these aids has been omitted from this chart.

ADDITIONAL INFORMATION

Additional information can be obtained at www.nauticalcharts.noaa.gov

SOUNDING DATUM

Soundings referred to Mean Lower Low Water (MLLW).

NOTE A

Navigation regulations are published in Chapter 2, U.S. Coast Pilot 3. Additions or revisions to Chapter 2 are published in the Notices to Mariners. Information concerning the regulations may be obtained at the Office of the Commander, 5th Coast Guard District in Portsmouth, VA or at the Office of the District Engineer, Corps of Engineers in Baltimore, MD.

Refer to charted regulation section numbers.

COLREGS DEMARCATION LINE

The Inland Navigational Rules Act of 1980 is in effect for vessels transiting this area. The seaward boundaries of this area are the COLREGS demarcation lines. In the area seaward of the COLREGS demarcation lines, vessels are governed by COLREGS: International Regulations for Preventing Collisions at Sea, 1972. The COLREGS demarcation line is defined in COLREGS 33 CFR 80.503.

PRECAUTIONARY AREA

Traffic within the Precautionary Area may consist of vessels operating between Delaware Bay and one of the established traffic lanes. Mariners are advised to exercise extreme care in navigating within this area.

INTRACOASTAL WATERWAY AIDS

The U.S. Aids to Navigation System is designed for use with nautical charts, and the exact meaning of an aid to navigation may not be clear unless the appropriate chart is consulted. Aids to navigation marking the Intracoastal Waterway exhibit unique yellow symbols to distinguish them from aids marking other waterways. When following the Intracoastal Waterway southward from Manasquan Inlet to Cape May, NJ, aids with yellow triangles should be kept on the starboard side of the vessel and aids with yellow squares should be kept on the port side of the vessel. A horizontal yellow band provides no lateral information, but simply identifies aids to navigation as marking the Intracoastal Waterway. All lights and lighted buoys marking the Intracoastal Waterway show a flash every four seconds, unless otherwise specified. The aids marking tributary channels, in general, are maintained by the state of New Jersey.

COLREGS DEMARCATION LINE

The Inland Navigational Rules Act of 1980 is in effect for vessels transiting this area. The seaward boundaries of this area are the COLREGS demarcation lines. In the area seaward of the COLREGS demarcation lines, vessels are governed by COLREGS: International Regulations for Preventing Collisions at Sea, 1972. The COLREGS demarcation line is defined in COLREGS 33 CFR 80.502g.

TRAFFIC SEPARATION SCHEME

One-way traffic lanes are RECOMMENDED for use by all vessels traveling between the points involved. They have been designed to aid in the prevention of collisions at the approaches to Delaware Bay, but are not intended in any way to supersede or alter the applicable Rules of the Road. Separation zones are intended to separate inbound and outbound traffic and to be free of ship traffic. Separation zones should not be used except for crossing purposes. When crossing traffic lane and separation zones use extreme caution.

CAUTION
LIMITATIONS ON THE
USE OF RADIO SIGNALS

Limitations on the use of radio signals as aids to marine navigation can be found in the U.S. Coast Guard Light Lists and National Geospatial-Intelligence Agency Publication 117.

Radio direction-finder bearings to commercial broadcasting stations are subject to error and should be used with caution.

CAUTION
FISH TRAP AREAS

Uncharted stakes, piles and, fishing structures, some submerged, may exist within this area.

CAUTION
OYSTER GROUNDS

Numerous stakes and obstructions exist within areas in Delaware Bay.

CAUTION

The Corps of Engineers has confirmed (April 2013) that the channel past the Turning Basin to Rehoboth Bay remains an authorized navigation project and has not been actively maintained since 1984. There are no plans to survey this project in the foreseeable future.

CAUTION

Improved channels are subject to shoaling, particularly at the edges.

CAUTION

Temporary changes or defects in aids to navigation are not indicated on this chart. See Local Notice to Mariners.

During some winter months or when endangered by ice, certain aids to navigation are replaced by other types or removed. For details, see U.S. Coast Guard Light List.

RESTRICTED AREA
RIGHT WHALE SEASONAL
MANAGEMENT AREA
(50 CFR 224.105)

All vessels greater than or equal to 65 feet / 19.8 meters in length must slow to speeds of 10 knots or less in seasonal management areas.

CAUTION
SUBMERGED CABLES AND PIPELINES

Additional uncharted submarine pipelines and submarine cables may exist within the area of this chart. Not all submarine pipelines and submarine cables are required to be buried, and those that were originally buried may have become exposed. Mariners should use extreme caution when operating vessels in depths of water comparable to their draft in areas where pipelines and cables may exist, and when anchoring, dragging or trawling.

Covered wells may be marked by lighted or unlighted buoys.

CAUTION
MISPELLION RIVER

Entrance to channel may be foul with rocks.

CAUTION

USACE conducts hydrographic surveys to monitor navigation conditions. These surveys are not intended to detect underwater features. Uncharted features hazardous to surface navigation are not expected but may exist in federal channels. For more information visit <https://navigation.usace.army.mil/Survey/Hydro>.

DANGER AREA

Offshore area east of Cape Henlopen to Rehoboth Beach is open to unrestricted surface navigation, but all vessels are cautioned neither to anchor, dredge, trawl, lay cables, bottom, nor conduct any other similar type of operation because of residual danger from mines on the bottom.

123040G

MIDDLE THOROFARE AIDS

Numerous lighted and unlighted buoys are not charted because they are frequently shifted in positions.

CAUTION

Mariners are warned to stay clear of the protective riprap surrounding navigational light structures.

DREDGING BUOYS

Lighted dredging buoys in Delaware Bay are not charted as they are frequently moved.

MISPELLION RIVER

The Corps of Engineers has confirmed (September 2013) that the channel past the jetties in the Mispillion River to Milford remains an authorized navigation project and has not been actively maintained since 1981. There are no plans to survey this project in the foreseeable future.

The controlling depth after the jetties was 0.6 meters/2 feet to the bascule bridge with shoaling to 0.3 meters/1 foot after the jetties, thence 0.6 meters/2 feet to Milford with shoaling to 0.3 meters/1 foot at Milford. Feb 1981 - Jun 2016

NOAA WEATHER RADIO BROADCASTS

The NOAA Weather Radio station listed below provides continuous weather broadcasts. The reception range is typically 20 to 40 nautical miles from the antenna site, but can be as much as 100 nautical miles for stations at high elevations.
Philadelphia, PA KIH-28 162.475 MHz

CAUTION

Mariners are warned to stay clear of the protective riprap surrounding navigational light structures.

CAUTION

Mariners are warned to stay clear of the protective riprap surrounding navigational light structures.

CAUTION

Unexploded ordnances may exist within an area extending 2.5 miles offshore from Kitts Hummock to Little River.

MAURICE RIVER

Numerous buoys are not charted because they are frequently shifted in position. Obstruction reported extending across the eastern half of the river at the shipbuilding company about 5 nautical miles above the mouth. Numerous uncharted wrecks exist along the banks of the river above Mauricetown. The controlling depth is reported to be 1.8 meters/6 feet from Buckshutem to Millville in 1967.

NOAA WEATHER RADIO BROADCASTS

The NOAA Weather Radio station listed below provides continuous weather broadcasts. The reception range is typically 20 to 40 nautical miles from the antenna site, but can be as much as 100 nautical miles for stations at high elevations.
Atlantic City, NJ KHB-38 162.400 MHz

123040G

NOAA WEATHER RADIO BROADCASTS

The NOAA Weather Radio station listed below provides continuous weather broadcasts. The reception range is typically 20 to 40 nautical miles from the antenna site, but can be as much as 100 nautical miles for stations at high elevations.
Lewes, DE WXJ-94 162.550 MHz

NOAA WEATHER RADIO BROADCASTS

The NOAA Weather Radio station listed below provides continuous weather broadcasts. The reception range is typically 20 to 40 nautical miles from the antenna site, but can be as much as 100 nautical miles for stations at high elevations.
Sudlersville, MD WXX-97 162.500 MHz

NOAA WEATHER RADIO BROADCASTS

The NOAA Weather Radio station listed below provides continuous weather broadcasts. The reception range is typically 20 to 40 nautical miles from the antenna site, but can be as much as 100 nautical miles for stations at high elevations.
Salisbury, DE KEC-92 162.475 MHz