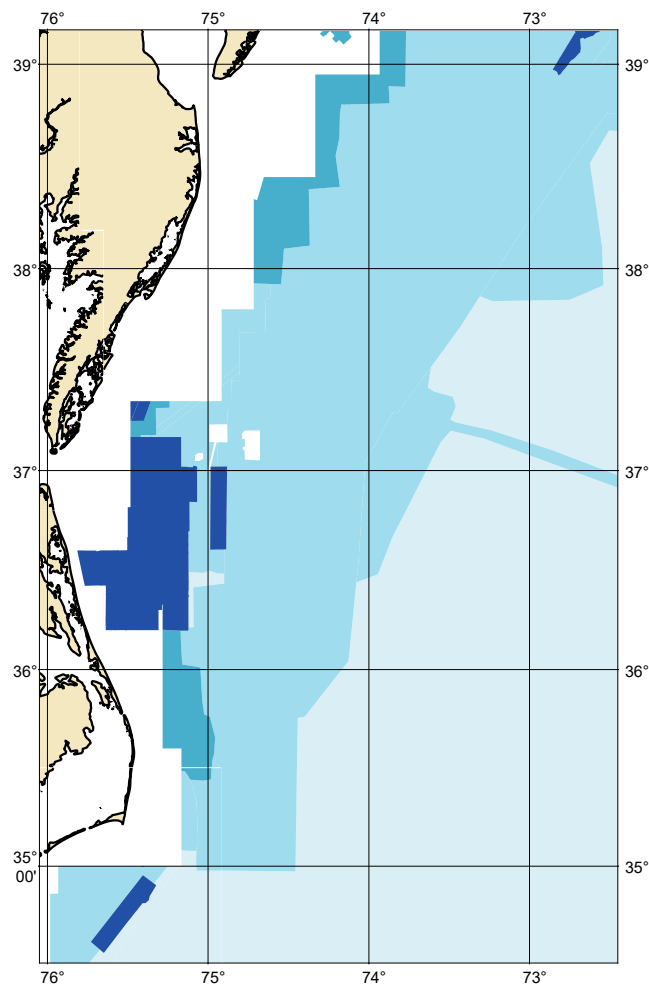


Zone of Confidence (ZOC) Diagram



ZOC CATEGORIES

ZOC	COLOR	POSITION ACCURACY	DEPTH ACCURACY	SEAFLOOR COVERAGE
A1		± 5 m + 5% depth ± 16.4 ft + 5% depth	= 0.50 m +1% d = 1.6 ft +1% d = 0.3 fm +1% d	All significant seafloor features detected.
A2		± 20 m ± 65.6 ft	= 1.00 m +2% d = 3.3 ft +2% d = 0.6 fm +2% d	All significant seafloor features detected.
B		± 50 m ± 164.0 ft	= 1.00 m +2% d = 3.3 ft +2% d = 0.6 fm +2% d	Uncharted features hazardous to surface navigation are not expected but may exist.
C		± 500 m ± 1640.4 ft	= 2.00 m +2% d = 6.6 ft +2% d = 1.1 fm +2% d	Depth anomalies may be expected.
D		Worse than ZOC C	Worse than ZOC C	Large depth anomalies may be expected.
U		Unassessed - The quality of the bathymetric data has yet to be assessed.		

NOAA CUSTOM CHART  
NOTES GEOSPATIAL DATABASE  
VERSION 3.0B - 20 FEBRUARY 2025

The records of the NOAA Custom Chart Notes Geospatial Database are current as of February 20, 2025. Subsequent additions and refinements are to be expected. Please refer to all available navigational publications for complete information about the charted area.

CAUTION  
CHART UPDATES

This NOAA Custom Chart contains up-to-date information only as of the time of creation, and will become outdated. Mariners are advised to visit <https://distribution.charts.noaa.gov/navigation-updates/> to check for critical and routine updates, and to render a new NOAA Custom Chart when the ENC data used to make the chart is updated. Notices to Mariners are not issued for corrections to this NOAA Custom Chart.

AUTHORITIES

Hydrography and topography by the National Ocean Service, Coast Survey, with additional data from the Corps of Engineers, Geological Survey, U.S. Coast Guard and National Geospatial-Intelligence Agency.

COMMENTS REQUESTED

NOAA encourages users to submit inquiries, discrepancies, or comments about this chart via NOAA's ASSIST tool at <https://nauticalcharts.noaa.gov/customer-service/assist/>.

CAUTION  
AUTOMATED CHART GENERATION

This NOAA Custom Chart has been automatically rendered from NOAA Electronic Navigational Chart (NOAA ENC®) data. Mariners using this NOAA Custom Chart are advised that this is a static reproduction of the NOAA ENC®. This NOAA Custom Chart has not been individually quality checked or adjusted for optimal use for navigation. The portrayal may be at a different scale from that of the original NOAA ENC®. Mariners are advised to use caution when using this NOAA Custom Chart for navigation and are encouraged to use the latest NOAA ENC® to access the most up-to-date information. Mariners must also comply with all applicable regulatory requirements.

HEIGHTS

Heights of fixed aids to navigation and vertical clearances of overhead obstructions will be shown in feet if the units are set to feet or fathoms. If units are set to meters, heights will be shown in meters. Land elevation values are shown in meters only.

WATER LEVELS, CURRENTS, AND TIDES

Real-time water levels, tide predictions, and tidal current predictions are available on the internet from NOAA's Center for Operational Oceanographic Products and Services (CO-OPS) at [https://tidesandcurrents.noaa.gov/water\\_level\\_info.html](https://tidesandcurrents.noaa.gov/water_level_info.html) and [https://tidesandcurrents.noaa.gov/currents\\_info.html](https://tidesandcurrents.noaa.gov/currents_info.html).

ABBREVIATIONS

For complete list of Symbols and Abbreviations, see Chart No. 1.

# 122000G

## POLLUTION REPORTS

Report all spills of oil and hazardous substances to the National Response Center via 1-800-424-8802 (toll free), or to the nearest U.S. Coast Guard facility if telephone communication is impossible (33 CFR 153).

## WARNING

The prudent mariner will not rely solely on any single aid to navigation, particularly on floating aids. See U.S. Coast Guard Light List and U.S. Coast Pilot for details.

## SUPPLEMENTAL INFORMATION

Consult U.S. Coast Pilot 3 for important supplemental information.

## SOUNDING DATUM

Soundings referred to Mean Lower Low Water (MLLW).

## NOTE A

Navigation regulations are published in Chapter 2, U.S. Coast Pilot 3. Additions or revisions to Chapter 2 are published in the Notices to Mariners. Information concerning the regulations may be obtained at the Office of the Commander, 5th Coast Guard District in Portsmouth, VA or at the Office of the District Engineer, Corps of Engineers in Baltimore, MD.

Refer to charted regulation section numbers.

## AIDS TO NAVIGATION

Consult U.S. Coast Guard Light List for supplemental information concerning aids to navigation.

## RADAR REFLECTORS

Radar reflectors have been placed on many floating aids to navigation. Individual radar reflector identification on these aids has been omitted from this chart.

## ADDITIONAL INFORMATION

Additional information can be obtained at [www.nauticalcharts.noaa.gov](http://www.nauticalcharts.noaa.gov)

## SUPPLEMENTAL INFORMATION

Consult U.S. Coast Pilot 4 for important supplemental information.

Refer to charted regulation section numbers.

## VERTICAL DATUM

Overhead clearances are referred to Mean High Water (MHW).

## NOTE A

Navigation regulations are published in Chapter 2, U.S. Coast Pilot 3. Additions or revisions to Chapter 2 are published in the Notices to Mariners. Information concerning the regulations may be obtained at the Office of the Commander, 5th Coast Guard District in Portsmouth, VA or at the Office of the District Engineer, Corps of Engineers in Norfolk, VA.

Refer to charted regulation section numbers.

## NOTE A

Navigation regulations are published in Chapter 2, U.S. Coast Pilot 3. Additions or revisions to Chapter 2 are published in the Notices to Mariners. Information concerning the regulations may be obtained at the Office of the Commander, 5th Coast Guard District in Portsmouth, VA or at the Office of the District Engineer, Corps of Engineers in Philadelphia, PA.

Refer to charted regulation section numbers.

## NOTE A

Navigation regulations are published in Chapter 2, U.S. Coast Pilot 4. Additions or revisions to Chapter 2 are published in the Notices to Mariners. Information concerning the regulations may be obtained at the Office of the Commander, 5th Coast Guard District in Portsmouth, VA or at the Office of the District Engineer, Corps of Engineers in Norfolk, VA.

Refer to charted regulation section numbers.

## PRECAUTIONARY AREA

Traffic within the Precautionary Area may consist of vessels operating between Delaware Bay and one of the established traffic lanes. Mariners are advised to exercise extreme care in navigating within this area.

## CAUTION

Temporary changes or defects in aids to navigation are not indicated on this chart. See Local Notice to Mariners.

## NOTE A

Navigation regulations are published in Chapter 2, U.S. Coast Pilot 4. Additions or revisions to Chapter 2 are published in the Notices to Mariners. Information concerning the regulations may be obtained at the Office of the Commander, 5th Coast Guard District in Portsmouth, VA or at the Office of the District Engineer, Corps of Engineers in Wilmington, NC.

Refer to charted regulation section numbers.

## HURRICANES AND TROPICAL STORMS

Hurricanes, tropical storms and other major storms may cause considerable damage to marine structures, aids to navigation and moored vessels, resulting in submerged debris in unknown locations. Charted soundings, channel depths and shoreline may not reflect actual conditions following these storms. Fixed aids to navigation may have been damaged or destroyed. Buoys may have been moved from their charted positions, damaged, sunk, extinguished or otherwise made inoperative. Mariners should not rely upon the position or operation of an aid to navigation. Wrecks and submerged obstructions may have been displaced from charted locations. Pipelines may have become uncovered or moved. Mariners are urged to exercise extreme caution and are requested to report aids to navigation discrepancies and hazards to navigation to the nearest United States Coast Guard unit.

CAUTION  
LIMITATIONS ON THE  
USE OF RADIO SIGNALS

Limitations on the use of radio signals as aids to marine navigation can be found in the U.S. Coast Guard Light Lists and National Geospatial-Intelligence Agency Publication 117.

Radio direction-finder bearings to commercial broadcasting stations are subject to error and should be used with caution.

CAUTION

Numerous duck blinds, stakes, piles and pipes exist in the waterways of Lynnhaven Bay, Long Creek, Broad Bay and Linkhorn Bay; those above or awash at MHHW are not charted. Submerged piles which have been located are charted, but additional submerged piles may exist.

CAUTION

Temporary changes or defects in aids to navigation are not indicated on this chart. See Local Notice to Mariners. During some winter months or when endangered by ice, certain aids to navigation are replaced by other types or removed. For details, see U.S. Coast Guard Light List.

BUOY TESTING AREA

There is a buoy testing area at the entrance of the Chesapeake Bay.

RESTRICTED AREA  
RIGHT WHALE SEASONAL  
MANAGEMENT AREA  
(50 CFR 224.105)

All vessels greater than or equal to 65 feet / 19.8 meters in length must slow to speeds of 10 knots or less in seasonal management areas.

CAUTION  
FISH TRAP AREAS

Uncharted stakes, piles and, fishing structures, some submerged, may exist within this area.

CAUTION

The Corps of Engineers has confirmed (April 2013) that the channel past the Turning Basin to Rehoboth Bay remains an authorized navigation project and has not been actively maintained since 1984. There are no plans to survey this project in the foreseeable future.

CAUTION

Hydrography is not charted on Diamond Shoals due to the changeable nature of the area. Navigation in the area is extremely hazardous to all types of craft.

DANGER AREA

Offshore area east of Cape Henlopen to Rehoboth Beach is open to unrestricted surface navigation, but all vessels are cautioned neither to anchor, dredge, trawl, lay cables, bottom, nor conduct any other similar type of operation because of residual danger from mines on the bottom.

DANGER AREA

Area approaching Chesapeake Bay Entrance is open to unrestricted surface navigation but all vessels are cautioned neither to anchor, dredge, trawl, lay cables, bottom, or conduct and similar type of operation because of residual danger from mines on the bottom.

## 122000G

### NOTE Z NO-DISCHARGE ZONE, 40 CFR 140

Under the Clean Water Act, Section 312, all vessels operating within a No-Discharge Zone (NDZ) are completely prohibited from discharging any sewage, treated or untreated, into the waters. All vessels with an installed marine sanitation device (MSD) that are navigating, moored, anchored, or docked within a NDZ must have the MSD disabled to prevent the overboard discharge of sewage (treated or untreated) or install a holding tank. Regulations for the NDZ are contained in the U.S. Coast Pilot. Additional information concerning the regulations and requirements may be obtained from the Environmental Protection Agency (EPA) website: <https://www.epa.gov/vessels-marinas-and-ports>.

### CHANGEABLE AREA

Hatteras Inlet is subject to continual change. Entrance buoys are not charted because they are frequently shifted in position.

### UNEXPLODED ORDNANCE

Possible unexploded bombs and ammunition in and adjacent to danger zone in the vicinity of Little Inlet.

### MONITOR MARINE SANCTUARY (PROTECTED AREA: 15 CFR 922; SEE NOTE A)

Anchoring, fishing, or diving within the boundary of Monitor National Marine Sanctuary is prohibited without a permit.

For information write:  
Monitor National Marine Sanctuary  
NOAA  
Building 1519  
Fort Eustis, VA 23604-5544.

### TOMS COVE AIDS

The channels in western Toms Cove are subject to continual changes. Entrance buoys are not charted because they are frequently shifted in position.

### REHOBOTH BAY AIDS

The aids to navigation in Rehoboth Bay and Indian River Inlet are unreliable and the remaining portions of fixed aids, damaged or destroyed by ice or coastal storms, may be hazardous to navigation. Extreme caution in navigating these waters is advised. Indian River Inlet Buoys 4 to 17 mark a shifting channel and are not charted.

### LOCAL MAGNETIC DISTURBANCE

Differences of as much as 3° from the normal variation have been observed, 6 to 12 nautical miles offshore from Wimble Shoals to Cape Hatteras.