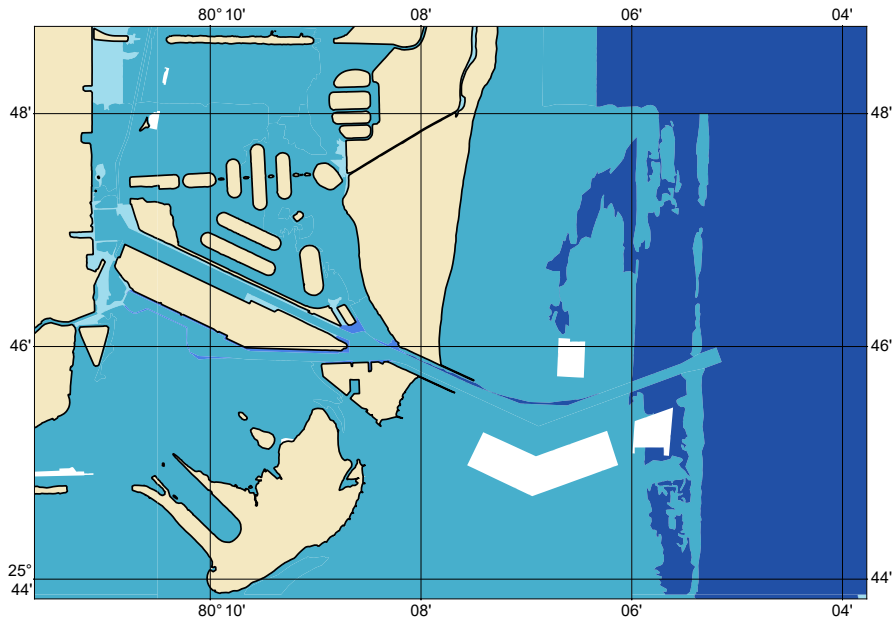


### Zone of Confidence (ZOC) Diagram



#### ZOC CATEGORIES

ZOC	COLOR	POSITION ACCURACY	DEPTH ACCURACY	SEAFLOOR COVERAGE
A1		± 5 m + 5% depth ± 16.4 ft + 5% depth	= 0.50 m +1% d = 1.6 ft +1% d = 0.3 fm +1% d	All significant seafloor features detected.
A2		± 20 m ± 65.6 ft	= 1.00 m +2% d = 3.3 ft +2% d = 0.6 fm +2% d	All significant seafloor features detected.
B		± 50 m ± 164.0 ft	= 1.00 m +2% d = 3.3 ft +2% d = 0.6 fm +2% d	Uncharted features hazardous to surface navigation are not expected but may exist.
C		± 500 m ± 1640.4 ft	= 2.00 m +2% d = 6.6 ft +2% d = 1.1 fm +2% d	Depth anomalies may be expected.
D		Worse than ZOC C	Worse than ZOC C	Large depth anomalies may be expected.
U		Unassessed - The quality of the bathymetric data has yet to be assessed.		

# 114680G

NOAA CUSTOM CHART  
NOTES GEOSPATIAL DATABASE  
VERSION 2.0B - 29 MARCH 2024

CAUTION  
AUTOMATED CHART GENERATION

The records of the NOAA Custom Chart Notes Geospatial Database are current as of May 1st, 2023. Subsequent additions and refinements are to be expected. Please refer to all available navigational publications for complete information about the charted area.

## CAUTION CHART UPDATES

This NOAA Custom Chart contains up-to-date information only as of the time of creation, and will become outdated. Mariners are advised to visit [https://distribution.charts.noaa.gov/weekly\\_updates/](https://distribution.charts.noaa.gov/weekly_updates/) to check for weekly updates, and to render a new NOAA Custom Chart when information is updated. Notices to Mariners are not issued for corrections to this NOAA Custom Chart.

## AUTHORITIES

Hydrography and topography by the National Ocean Service, Coast Survey, with additional data from the Corps of Engineers, Geological Survey, U.S. Coast Guard and National Geospatial-Intelligence Agency.

## COMMENTS REQUESTED

NOAA encourages users to submit inquiries, discrepancies, or comments about this chart via NOAA's ASSIST tool at <https://nauticalcharts.noaa.gov/customer-service/assist/>.

This NOAA Custom Chart has been automatically rendered from NOAA Electronic Navigational Chart (NOAA ENC®) data. Mariners using this NOAA Custom Chart are advised that this is a static reproduction of the NOAA ENC®. This NOAA Custom Chart has not been individually quality checked or adjusted for optimal use for navigation. The portrayal may be at a different scale from that of the original NOAA ENC®. Mariners are advised to use caution when using this NOAA Custom Chart for navigation and are encouraged to use the latest NOAA ENC® to access the most up-to-date information. Mariners must also comply with all applicable regulatory requirements.

## HEIGHTS

Heights of fixed aids to navigation and vertical clearances of overhead obstructions will be shown in feet if the units are set to feet or fathoms. If units are set to meters, heights will be shown in meters. Land elevation values are shown in meters only.

## WATER LEVELS, CURRENTS, AND TIDES

Real-time water levels, tide predictions, and tidal current predictions are available on the internet from NOAA's Center for Operational Oceanographic Products and Services (CO-OPS) at [https://tidesandcurrents.noaa.gov/water\\_level\\_info.html](https://tidesandcurrents.noaa.gov/water_level_info.html) and [https://tidesandcurrents.noaa.gov/currents\\_info.html](https://tidesandcurrents.noaa.gov/currents_info.html).

## ABBREVIATIONS

For complete list of Symbols and Abbreviations, see Chart No. 1.

# 114680G

## POLLUTION REPORTS

Report all spills of oil and hazardous substances to the National Response Center via 1-800-424-8802 (toll free), or to the nearest U.S. Coast Guard facility if telephone communication is impossible (33 CFR 153).

## WARNING

The prudent mariner will not rely solely on any single aid to navigation, particularly on floating aids. See U.S. Coast Guard Light List and U.S. Coast Pilot for details.

## SUPPLEMENTAL INFORMATION

Consult U.S. Coast Pilot 4 for important supplemental information.

Refer to charted regulation section numbers.

## VERTICAL DATUM

Overhead clearances are referred to Mean High Water (MHW).

## COLREGS DEMARCATION LINE

The Inland Navigational Rules Act of 1980 is in effect for vessels transiting this area. The seaward boundaries of this area are the COLREGS demarcation lines. In the area seaward of the COLREGS demarcation lines, vessels are governed by COLREGS: International Regulations for Preventing Collisions at Sea, 1972. The COLREGS demarcation line is defined in COLREGS 33 CFR 80.730.

## AIDS TO NAVIGATION

Consult U.S. Coast Guard Light List for supplemental information concerning aids to navigation.

## RADAR REFLECTORS

Radar reflectors have been placed on many floating aids to navigation. Individual radar reflector identification on these aids has been omitted from this chart.

## ADDITIONAL INFORMATION

Additional information can be obtained at [www.nauticalcharts.noaa.gov](http://www.nauticalcharts.noaa.gov)

## SOUNDING DATUM

Soundings referred to Mean Lower Low Water (MLLW).

## NOTE A

Navigation regulations are published in Chapter 2, U.S. Coast Pilot 4. Additions or revisions to Chapter 2 are published in the Notices to Mariners. Information concerning the regulations may be obtained at the Office of the Commander, 7th Coast Guard District in Miami, FL or at the Office of the District Engineer, Corps of Engineers in Jacksonville, FL.

Refer to charted regulation section numbers.

# 114680G

## COLREGS DEMARCATION LINE

The Inland Navigational Rules Act of 1980 is in effect for vessels transiting this area. The seaward boundaries of this area are the COLREGS demarcation lines. In the area seaward of the COLREGS demarcation lines, vessels are governed by COLREGS: International Regulations for Preventing Collisions at Sea, 1972. The COLREGS demarcation line is defined in COLREGS 33 CFR 80.735a.

## HURRICANES AND TROPICAL STORMS

Hurricanes, tropical storms and other major storms may cause considerable damage to marine structures, aids to navigation and moored vessels, resulting in submerged debris in unknown locations. Charted soundings, channel depths and shoreline may not reflect actual conditions following these storms. Fixed aids to navigation may have been damaged or destroyed. Buoys may have been moved from their charted positions, damaged, sunk, extinguished or otherwise made inoperative. Mariners should not rely upon the position or operation of an aid to navigation. Wrecks and submerged obstructions may have been displaced from charted locations. Pipelines may have become uncovered or moved. Mariners are urged to exercise extreme caution and are requested to report aids to navigation discrepancies and hazards to navigation to the nearest United States Coast Guard unit.

## COLREGS DEMARCATION LINE

The Inland Navigational Rules Act of 1980 is in effect for vessels transiting this area. The seaward boundaries of this area are the COLREGS demarcation lines. In the area seaward of the COLREGS demarcation lines, vessels are governed by COLREGS: International Regulations for Preventing Collisions at Sea, 1972. The COLREGS demarcation line is defined in COLREGS 33 CFR 80.735b.

## CORAL PROPAGATION

Uncharted submerged manmade structures, designed for the purpose of coral propagation, may exist within the limits of this chart, principally in shallow water areas.

## PRECAUTIONARY AREA

A Precautionary Area exists around Miami Lighted Buoy "M". Large commercial ships inbound and outbound of the port will board and disembark pilots within this area and will be severely limited in their ability to maneuver. All vessels are advised to exercise extreme care in navigating within this area.

# 114680G

## INTRACOASTAL WATERWAY AIDS

The U.S. Aids to Navigation System is designed for use with nautical charts, and the exact meaning of an aid to navigation may not be clear unless the appropriate chart is consulted. Aids to navigation marking the Intracoastal Waterway exhibit unique yellow symbols to distinguish them from aids marking other waterways. When following the Intracoastal Waterway southward from Norfolk, VA to Cross Bank, FL, aids with yellow triangles should be kept on the starboard side of the vessel and aids with yellow squares should be kept on the port side of the vessel. A horizontal yellow band provides no lateral information, but simply identifies aids to navigation as marking the Intracoastal Waterway.

### CAUTION BASCULE BRIDGES

For bascule bridges, whose spans do not open to a full upright or vertical position, unlimited vertical clearance is not available for the entire charted horizontal clearance.

### CAUTION SUBMERGED CABLES AND PIPELINES

Additional uncharted submarine pipelines and submarine cables may exist within the area of this chart. Not all submarine pipelines and submarine cables are required to be buried, and those that were originally buried may have become exposed. Mariners should use extreme caution when operating vessels in depths of water comparable to their draft in areas where pipelines and cables may exist, and when anchoring, dragging or trawling.

Covered wells may be marked by lighted or unlighted buoys.

### CAUTION

Temporary changes or defects in aids to navigation are not indicated on this chart. See Local Notice to Mariners.

During some winter months or when endangered by ice, certain aids to navigation are replaced by other types or removed. For details, see U.S. Coast Guard Light List.

### CAUTION LIMITATIONS ON THE USE OF RADIO SIGNALS

Limitations on the use of radio signals as aids to marine navigation can be found in the U.S. Coast Guard Light Lists and National Geospatial-Intelligence Agency Publication 117.

Radio direction-finder bearings to commercial broadcasting stations are subject to error and should be used with caution.

### CAUTION

Improved channels are subject to shoaling, particularly at the edges.

### CAUTION

Cross-channel current variations in parts of the Cut-2 and in the Cut-3 (50) are particularly difficult to negotiate because of variances between predicted and actual currents. Caution should be exercised when entering from the sea during flood tide with northeasterly winds; a strong turning torque occurs when just inside the north jetty. A similar but less serious situation occurs when leaving the port during ebb tides. Horizontal current gradients occur in the turning basin at the northwest corner of Dodge Island, which may make maneuvering difficult. Ships may encounter current anomalies at the mouth of the Miami River.

# 114680G

## SEAPLANE LANDING AREA

The area in Miami Harbor from the turning basin to the northwest corner of Dodge Island is utilized intermittently as a seaplane operating area.

## PARTICULARLY SENSITIVE SEA AREA

A Particularly Sensitive Sea Area (PSSA) is an environmentally sensitive area around which mariners should exercise extreme caution. See U.S. Coast Pilot volumes for information regarding this area.

## ARTICULATED AIDS

An articulated aid to navigation consists of a pipe structure that oscillates around a universal coupling connected to a sinker. The structure is kept upright by the buoyancy of a submerged flotation chamber. It is designed primarily to mark narrow channels in depths of up to 18.2 meters/60 feet.

## PROHIBITED AREAS (AREAS TO BE AVOIDED)

Under the Florida Keys National Marine Sanctuary and Protection Act, Pub. L.101-605 and IMO advisory SN/Circ.145, these areas are to be avoided by tank vessels and vessels greater than 50 meters/164 feet in length.

## NOTE

The U.S. Army Corps of Engineers has reported, that as of in Aug 2016, they are no longer maintaining Dodge Island Cut Turning Basin.

## NOAA WEATHER RADIO BROADCASTS

The NOAA Weather Radio station listed below provides continuous weather broadcasts. The reception range is typically 20 to 40 nautical miles from the antenna site, but can be as much as 100 nautical miles for stations at high elevations.

Miami, FL KHB-34 162.55MHz