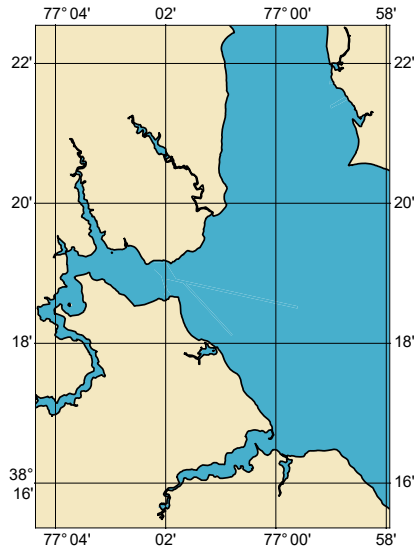


Zone of Confidence (ZOC) Diagram



ZOC CATEGORIES

ZOC	COLOR	POSITION ACCURACY	DEPTH ACCURACY	SEAFLOOR COVERAGE
A1		± 5 m + 5% depth ± 16.4 ft + 5% depth	= 0.50 m +1% d = 1.6 ft +1% d = 0.3 fm +1% d	All significant seafloor features detected.
A2		± 20 m ± 65.6 ft	= 1.00 m +2% d = 3.3 ft +2% d = 0.6 fm +2% d	All significant seafloor features detected.
B		± 50 m ± 164.0 ft	= 1.00 m +2% d = 3.3 ft +2% d = 0.6 fm +2% d	Uncharted features hazardous to surface navigation are not expected but may exist.
C		± 500 m ± 1640.4 ft	= 2.00 m +2% d = 6.6 ft +2% d = 1.1 fm +2% d	Depth anomalies may be expected.
D		Worse than ZOC C	Worse than ZOC C	Large depth anomalies may be expected.
U		Unassessed - The quality of the bathymetric data has yet to be assessed.		

122870G

NOAA CUSTOM CHART
NOTES GEOSPATIAL DATABASE
VERSION 2.0B - 29 MARCH 2024

CAUTION
AUTOMATED CHART GENERATION

The records of the NOAA Custom Chart Notes Geospatial Database are current as of May 1st, 2023. Subsequent additions and refinements are to be expected. Please refer to all available navigational publications for complete information about the charted area.

CAUTION CHART UPDATES

This NOAA Custom Chart contains up-to-date information only as of the time of creation, and will become outdated. Mariners are advised to visit https://distribution.charts.noaa.gov/weekly_updates/ to check for weekly updates, and to render a new NOAA Custom Chart when information is updated. Notices to Mariners are not issued for corrections to this NOAA Custom Chart.

AUTHORITIES

Hydrography and topography by the National Ocean Service, Coast Survey, with additional data from the Corps of Engineers, Geological Survey, U.S. Coast Guard and National Geospatial-Intelligence Agency.

COMMENTS REQUESTED

NOAA encourages users to submit inquiries, discrepancies, or comments about this chart via NOAA's ASSIST tool at <https://nauticalcharts.noaa.gov/customer-service/assist/>.

This NOAA Custom Chart has been automatically rendered from NOAA Electronic Navigational Chart (NOAA ENC®) data. Mariners using this NOAA Custom Chart are advised that this is a static reproduction of the NOAA ENC®. This NOAA Custom Chart has not been individually quality checked or adjusted for optimal use for navigation. The portrayal may be at a different scale from that of the original NOAA ENC®. Mariners are advised to use caution when using this NOAA Custom Chart for navigation and are encouraged to use the latest NOAA ENC® to access the most up-to-date information. Mariners must also comply with all applicable regulatory requirements.

HEIGHTS

Heights of fixed aids to navigation and vertical clearances of overhead obstructions will be shown in feet if the units are set to feet or fathoms. If units are set to meters, heights will be shown in meters. Land elevation values are shown in meters only.

WATER LEVELS, CURRENTS, AND TIDES

Real-time water levels, tide predictions, and tidal current predictions are available on the internet from NOAA's Center for Operational Oceanographic Products and Services (CO-OPS) at https://tidesandcurrents.noaa.gov/water_level_info.html and https://tidesandcurrents.noaa.gov/currents_info.html.

ABBREVIATIONS

For complete list of Symbols and Abbreviations, see Chart No. 1.

122870G

POLLUTION REPORTS

Report all spills of oil and hazardous substances to the National Response Center via 1-800-424-8802 (toll free), or to the nearest U.S. Coast Guard facility if telephone communication is impossible (33 CFR 153).

WARNING

The prudent mariner will not rely solely on any single aid to navigation, particularly on floating aids. See U.S. Coast Guard Light List and U.S. Coast Pilot for details.

SUPPLEMENTAL INFORMATION

Consult U.S. Coast Pilot 3 for important supplemental information.

VERTICAL DATUM

Overhead clearances are referred to Mean High Water (MHW).

SMALL CRAFT WARNINGS

During the boating season small-craft warnings will be displayed from sunrise to sunset on Maryland Marine Police Cruisers while underway in Maryland waters of the Chesapeake Bay and tributaries.

AIDS TO NAVIGATION

Consult U.S. Coast Guard Light List for supplemental information concerning aids to navigation.

RADAR REFLECTORS

Radar reflectors have been placed on many floating aids to navigation. Individual radar reflector identification on these aids has been omitted from this chart.

ADDITIONAL INFORMATION

Additional information can be obtained at www.nauticalcharts.noaa.gov

SOUNDING DATUM

Soundings referred to Mean Lower Low Water (MLLW).

NOTE A

Navigation regulations are published in Chapter 2, U.S. Coast Pilot 3. Additions or revisions to Chapter 2 are published in the Notices to Mariners. Information concerning the regulations may be obtained at the Office of the Commander, 5th Coast Guard District in Portsmouth, VA or at the Office of the District Engineer, Corps of Engineers in Baltimore, MD.

Refer to charted regulation section numbers.

122870G

OYSTER AQUACULTURE

Oyster bed aquaculture leases may exist within the limits of this chart. Mariners are cautioned that numerous markers may exist and watermen may be active in the area. Caution should be exercised when navigating in or near these areas, not to anchor or ground, in order to avoid damage to the beds. Depths may be shallower than the soundings shown. For more information, contact the local department of natural resources.

CAUTION

Improved channels are subject to shoaling, particularly at the edges.

CAUTION

SUBMERGED CABLES AND PIPELINES

Additional uncharted submarine pipelines and submarine cables may exist within the area of this chart. Not all submarine pipelines and submarine cables are required to be buried, and those that were originally buried may have become exposed. Mariners should use extreme caution when operating vessels in depths of water comparable to their draft in areas where pipelines and cables may exist, and when anchoring, dragging or trawling.

Covered wells may be marked by lighted or unlighted buoys.

CAUTION

BRIDGE UNDER CONSTRUCTION

Fixed and floating obstructions, some submerged, may exist within the bridge construction area. Mariners are advised to proceed with caution.

CAUTION

Temporary changes or defects in aids to navigation are not indicated on this chart. See Local Notice to Mariners.

During some winter months or when endangered by ice, certain aids to navigation are replaced by other types or removed. For details, see U.S. Coast Guard Light List.

CAUTION

LIMITATIONS ON THE USE OF RADIO SIGNALS

Limitations on the use of radio signals as aids to marine navigation can be found in the U.S. Coast Guard Light Lists and National Geospatial-Intelligence Agency Publication 117.

Radio direction-finder bearings to commercial broadcasting stations are subject to error and should be used with caution.

CAUTION

UNEXPLODED ORDNANCE

Mariners are cautioned against anchoring, dredging or trawling in the vicinity of Upper Machodoc Creek due to the possible existence of unexploded ordnance.

CAUTION

UNEXPLODED ORDNANCE

Due to hazards of unexploded ordnances, no person or craft in the Middle Danger Zone shall approach closer than 91.4 meters/100 yards to the shoreline of the Naval Surface Warfare Center, Dahlgren.

River currents may have transported ordnance outside the charted limits of the Middle Danger Zone.

122870G

CAUTION

Mariners are warned to stay clear of the protective riprap surrounding navigational light structures.

HARRY WEST NICE MEMORIAL BRIDGE

The center line of the main span is marked by a flashing red AERO obstruction light and a fixed green light surmounted by three fixed white lights mounted vertically 4.5 meters/15 feet apart.

NOAA WEATHER RADIO BROADCASTS

The NOAA Weather Radio station listed below provides continuous weather broadcasts. The reception range is typically 20 to 40 nautical miles from the antenna site, but can be as much as 100 nautical miles for stations at high elevations.

Washington,DC KHB-36 162.55MHz
(Manassas,VA)

POTOMAC RIVER

Numerous markers, established and maintained by the Potomac River Fisheries Commission, mark the Maryland and Virginia jurisdictional fishing boundaries. The markers display identifying letters "PRM" and "PRV" and numbers.

COURSES

Courses are TRUE and must be CORRECTED for any variation and compass deviation. The mileage figures on courses are international Nautical Miles.